

THROUGH-HOLE RADIAL HIGH CURRENT POWER CHOKES FAAIRD01 SERIES



FEATURES:

High Saturation Material
Polyolefin Shrink Tubing
Low DC Resistance
High Reliability Low cost

OPTIONS:

Packaging: Tape & Reel is Standard
(Qty: 1000 pcs)
Bulk packaging available for smaller quantities
Tolerance: 10% is standard
tighter tolerances available.

COMMON APPLICATIONS:

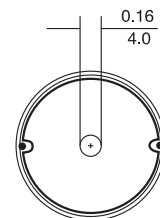
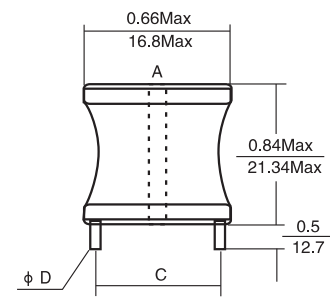
Switching Regulators
RFI Suppression Filters
SCR and TRIAC Controls
Automotive Systems

STANDARD SPECIFICATIONS

Part Number	L [μ H] @1KHz	DCR (Ω)Max	IDC (A Max)	Dim(Inches/mm) C Approx.	Dim(Inches/mm) D Nom.
FAAIRD01-1R0M	1.0	0.003	9	0.55/13.97	0.051/1.30
FAAIRD01-1R2M	1.2	0.003	9	0.55/13.97	0.051/1.30
FAAIRD01-1R5M	1.5	0.004	9	0.55/13.97	0.051/1.30
FAAIRD01-1R8M	1.8	0.004	9	0.55/13.97	0.051/1.30
FAAIRD01-2R2M	2.2	0.005	9	0.55/13.97	0.051/1.30
FAAIRD01-2R7M	2.7	0.005	9	0.55/13.97	0.051/1.30
FAAIRD01-3R3M	3.3	0.005	9	0.55/13.97	0.051/1.30
FAAIRD01-3R9M	3.9	0.006	9	0.55/13.97	0.051/1.30
FAAIRD01-4R7M	4.7	0.007	9	0.55/13.97	0.051/1.30
FAAIRD01-5R6M	5.6	0.007	9	0.55/13.97	0.051/1.30
FAAIRD01-6R8M	6.8	0.008	9	0.55/13.97	0.051/1.30
FAAIRD01-8R2M	8.2	0.009	9	0.55/13.97	0.051/1.30
FAAIRD01-100K	10	0.010	9	0.55/13.97	0.051/1.30
FAAIRD01-120K	12	0.011	9	0.55/13.97	0.051/1.30
FAAIRD01-150K	15	0.015	7.2	0.53/13.46	0.043/1.10
FAAIRD01-180K	18	0.016	7.2	0.53/13.46	0.043/1.10
FAAIRD01-220K	22	0.020	5.5	0.53/13.46	0.043/1.10
FAAIRD01-270K	27	0.030	4.5	0.53/13.46	0.039/1.00
FAAIRD01-330K	33	0.040	4.0	0.53/13.46	0.039/1.00
FAAIRD01-390K	39	0.046	4.0	0.53/13.46	0.039/1.00
FAAIRD01-470K	47	0.062	2.8	0.53/13.46	0.035/0.90
FAAIRD01-560K	56	0.069	2.8	0.53/13.46	0.035/0.90
FAAIRD01-680K	68	0.077	2.8	0.50/12.70	0.032/0.80
FAAIRD01-820K	82	0.083	2.8	0.50/12.70	0.032/0.80
FAAIRD01-101K	100	0.095	2.8	0.50/12.70	0.032/0.80
FAAIRD01-121K	120	0.127	2.0	0.50/12.70	0.030/0.75
FAAIRD01-151K	150	0.181	1.6	0.50/12.70	0.030/0.75
FAAIRD01-181K	180	0.217	1.6	0.50/12.70	0.025/0.63
FAAIRD01-221K	220	0.240	1.6	0.50/12.70	0.025/0.63
FAAIRD01-271K	270	0.300	1.6	0.47/11.94	0.020/0.50
FAAIRD01-331K	330	0.336	1.3	0.47/11.94	0.020/0.50
FAAIRD01-391K	390	0.460	1.0	0.47/11.94	0.020/0.50
FAAIRD01-471K	470	0.636	0.8	0.47/11.94	0.020/0.50
FAAIRD01-561K	560	0.696	0.8	0.47/11.94	0.020/0.50

Note: 1. K = $\pm 10\%$, M = $\pm 20\%$

PHYSICAL CHARACTERISTICS



DIMENSIONS: $\frac{\text{INCHES}}{\text{mm}}$

ELECTRONICAL SCHEMATIC



TECHNICAL INFORMATION

Inductance Testing: HP4284A, HP4285A or equivalent

RDC: QuadTech 1880 Milliohm meter

Q - HP4342A

SRF - HP4191A or HP4194A

Rated Current L value drop 10% typ. at IDC against its initial value

Temperature rise 40 C Max Reference ambient temperature

Solderability: 75% of the lead wire shall be covered

Soldering Methods: Wave, Reflow

Operating Temperature: -25°C to +85°C

Storage Temperature: -55°C to +125°C

Terminal bending strength: 24.5N Min

Moisture resistance: $\Delta L/L \leq \pm 10\%$ $\Delta Q/Q \leq \pm 25\%$

Note: All specifications subject to change without notice.