

# THROUGH-HOLE RADIAL HIGH CURRENT POWER CHOKES FAAIRD04 SERIES



## FEATURES:

- High Saturation Material
- Polyolefin Shrink Tubing
- Low DC Resistance
- High Reliability Low cost

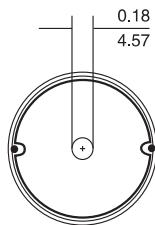
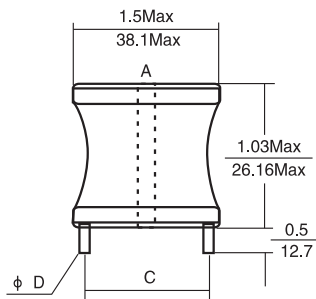
## OPTIONS:

Packaging: Tape & Reel is Standard  
[Qty: 1000 pcs]  
Bulk packaging available for smaller quantities  
Tolerance: 10% is standard  
tighter tolerances available.

## COMMON APPLICATIONS:

- Switching Regulators
- RFI Suppression Filters
- SCR and TRIAC Controls
- Automotive Systems

### PHYSICAL CHARACTERISTICS



DIMENSIONS: INCHES  
mm

### ELECTRONICAL SCHEMATIC



### TECHNICAL INFORMATION

Inductance Testing: HP4284A, HP4285A or equivalent  
RDC: QuadTech 1880 Milliohmmer  
Q - HP4342A  
SRF - HP4191A or HP4194A  
Rated Current L value drop 10% typ. at IDC against its initial value  
Temperature rise 40°C Max Reference ambient temperature  
Solderability: 75% of the lead wire shall be covered  
Soldering Methods: Wave, Reflow  
Operating Temperature: -25°C to +85°C  
Storage Temperature: -55°C to +125°C  
Terminal bending strength: 24.5N Min  
Moisture resistance: ΔL/L ≤ ±10% ΔQ/Q ≤ ±25%

Note: All specifications subject to change without notice.

### STANDARD SPECIFICATIONS

Part Number	L [μH] @1KHz	DCR [Ω Max]	IDC [A Max]	Dim [Inches/mm] C Approx.	Dim [Inches/mm] D Nom.
FAAIRD04-1R8M	1.8	0.002	27	1.11/28.19	0.0791/2.00
FAAIRD04-2R2M	2.2	0.002	27	1.11/28.19	0.0791/2.00
FAAIRD04-2R7M	2.7	0.003	27	1.11/28.19	0.0791/2.00
FAAIRD04-3R3M	3.3	0.003	27	1.11/28.19	0.0791/2.00
FAAIRD04-3R9M	3.9	0.003	27	1.11/28.19	0.0791/2.00
FAAIRD04-4R7M	4.7	0.003	27	1.11/28.19	0.0791/2.00
FAAIRD04-5R6M	5.6	0.004	27	1.11/28.19	0.0791/2.00
FAAIRD04-6R8M	6.8	0.004	27	1.15/29.21	0.0791/2.00
FAAIRD04-8R2M	8.2	0.004	27	1.15/29.21	0.0791/2.00
FAAIRD04-100K	10	0.005	27	1.15/29.21	0.0791/2.00
FAAIRD04-120K	12	0.005	27	1.15/29.21	0.0791/2.00
FAAIRD04-150K	15	0.006	27	1.15/29.21	0.0791/2.00
FAAIRD04-180K	18	0.008	27	1.15/29.21	0.0791/2.00
FAAIRD04-220K	22	0.009	21	1.15/29.21	0.0791/2.00
FAAIRD04-270K	27	0.010	21	1.15/29.21	0.0791/2.00
FAAIRD04-330K	33	0.011	21	1.15/29.21	0.071/1.80
FAAIRD04-390K	39	0.012	21	1.15/29.21	0.071/1.80
FAAIRD04-470K	47	0.018	14.4	1.15/29.21	0.071/1.80
FAAIRD04-560K	56	0.019	14.4	1.15/29.21	0.063/1.60
FAAIRD04-680K	68	0.021	14.4	1.15/29.21	0.063/1.60
FAAIRD04-820K	82	0.023	14.4	1.15/29.21	0.063/1.60
FAAIRD04-101K	100	0.025	14.4	1.15/29.21	0.063/1.60
FAAIRD04-121K	120	0.028	14.4	1.15/29.21	0.055/1.40
FAAIRD04-151K	150	0.040	14.4	1.15/29.21	0.055/1.40
FAAIRD04-181K	180	0.045	14.4	1.15/29.21	0.055/1.40
FAAIRD04-221K	220	0.050	14.4	1.15/29.21	0.055/1.40
FAAIRD04-271K	270	0.056	14.4	1.15/29.21	0.055/1.40
FAAIRD04-331K	330	0.074	14.4	1.15/29.21	0.055/1.40
FAAIRD04-391K	390	0.082	9.0	1.15/29.21	0.043/1.10
FAAIRD04-471K	470	0.114	7.2	1.15/29.21	0.043/1.10
FAAIRD04-561K	560	0.125	7.2	1.15/29.21	0.039/1.00
FAAIRD04-681K	680	0.139	7.2	1.15/29.21	0.039/1.00
FAAIRD04-821K	820	0.154	7.2	1.15/29.21	0.039/1.00
FAAIRD04-102K	1000	0.216	5.5	1.15/29.21	0.039/1.00
FAAIRD04-122K	1200	0.232	5.5	1.14/28.95	0.035/0.90
FAAIRD04-152K	1500	0.324	4.5	1.14/28.95	0.035/0.90
FAAIRD04-182K	1800	0.360	4.5	1.14/28.95	0.035/0.90
FAAIRD04-222K	2200	0.494	4.0	1.10/27.94	0.031/0.80
FAAIRD04-272K	2700	0.555	4.0	1.12/28.44	0.031/0.80
FAAIRD04-332K	3300	0.773	2.8	1.10/27.94	0.030/0.75
FAAIRD04-392K	3900	0.845	2.8	1.10/27.94	0.030/0.75
FAAIRD04-472K	4700	1.14	2.0	1.12/28.44	0.030/0.75
FAAIRD04-562K	5600	1.60	2.0	1.09/27.68	0.026/0.65
FAAIRD04-682K	6800	1.76	1.6	1.12/28.44	0.026/0.65
FAAIRD04-822K	8200	1.95	1.6	1.09/27.68	0.022/0.57
FAAIRD04-103K	10000	2.76	1.3	1.11/28.19	0.022/0.57
FAAIRD04-123K	12000	3.04	1.3	1.08/27.43	0.020/0.50
FAAIRD04-153K	15000	3.39	1.3	1.10/27.94	0.020/0.50

Note: 1. K = ±10%, M = ±20%