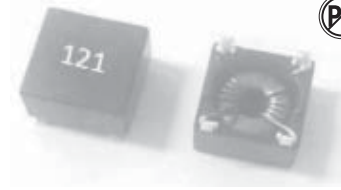




## SMD COMMON MODE CHOKES FASCM0805 SERIES



### FEATURES:

High rated currents, reduced components height  
Wire wound construction  
Common mode choke with best EMI suppression effect  
High impedance

### APPLICATIONS:

Preventive measure against common mode noise radiation emissions from power line or else Best for high current circuit such as car, wireless charging and power device design.

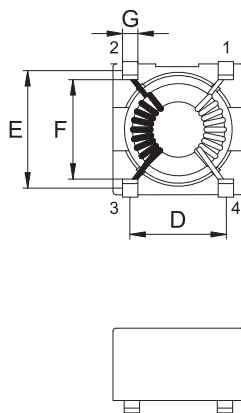
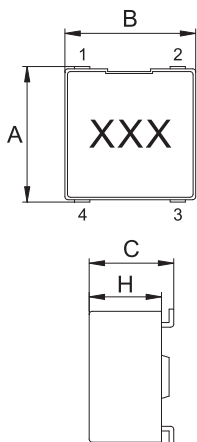
### GENERAL SPECIFICATIONS:

Rated current 0.25A to 1.4A.  
Inductance: 0.12mH to 5.0mH.  
Turns ratio: N1:N2=1:1 ± 2%.  
Inductance tolerance: ± 40% at 20°C.  
Operating temperature: -25°C to +105°C.  
Storage Temp: -0°C to +40°C.  
Resistance to Soldering Heat: 260°C for 10 sec.  
Temperature Rise: 45°C Typ. at Rated Current.  
All parts meet ROHS compliance.

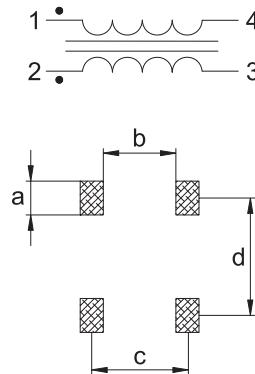
### ELECTRICAL CHARACTERISTICS

Part Number	Impedance [ $\Omega$ ]Min	Inductance [ $\mu$ H] $\pm$ 40% 100KHz/100mV	Rated current [A]	D.C. Resistor [ $m\Omega$ ] Max at 20°C	Test Frequency
FASCM0805-121	200	120	1.40	25	10~200MHz
FASCM0805-251	400	250	1.25	30	5~100MHz
FASCM0805-501	800	500	0.90	60	2~50MHz
FASCM0805-102	1400	1000	0.50	180	1~40MHz
FASCM0805-202	2000	2000	0.45	250	0.5~15MHz
FASCM0805-302	3000	3000	0.40	300	0.5~10MHz
FASCM0805-402	4000	4000	0.30	580	0.5~5MHz
FASCM0805-502	5000	5000	0.25	630	0.5~3MHz

### TECHNICAL INFORMATION



### ELECTRICAL SCHEMATIC & PAD LAYOUT



### DIMENSIONS:MM

Part number	A	B	C	D	E	F	G	H	a	b	c	d
FASCM0805	8.8 $\pm$ 0.5	8.5 $\pm$ 0.5	6.0 Max	6.22 $\pm$ 0.3	7.62 $\pm$ 0.3	6.45 REF	1.00 REF	4.7 REF	1.50 REF	2.20 REF	6.22 REF	7.62 REF