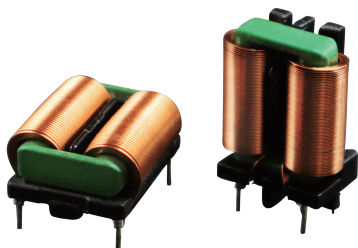


## FRAME CORE CHOKES FOR POWER LINES

### FACCF2418 SERIES

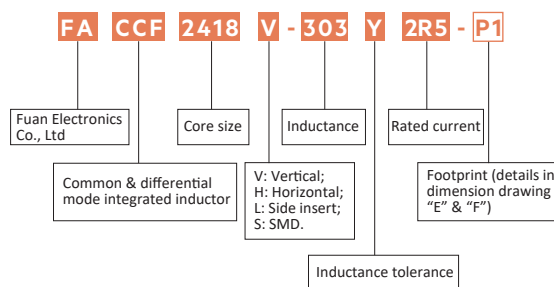


#### ELECTRICAL SPECIFICATION

- Rated voltage: 85~264 VAC
- Turns ratio: N1:N2=1:1±2%
- Hi-pot: 1500VAC/1mA/2second
- Operating temperature range: -40°C to+120°C
- Temperature Rise: 40°C Ref. at rated current
- All parts meet RoHS compliant
- Insulation grade: Class F
- Weight: 21.0g (reference)

#### FEATURES

- Small size, low leakage flux due to SQ core
- Low stray capacitance, high attenuation of a wide frequency band
- There is no danger of the layer short for the single-layer rolling
- High attenuation to the normal mode noise
- Winding time 90% down
- High inductance was achieved by the ferrite mixing and the baking technology that developed originally



#### ELECTRICAL CHARACTERISTICS AT 25°C (V & H Series)

Part Number	Ind.(mH) 1KHz 0.25V Min	Lstray (uH) Typ	D.C.Resistance (mohms) Max	Rated Current (A)Typ	Wire (mm)
FACCF2418V-353Y2R5-□ FACCF2418H-353Y2R5-□	35.00	230	140	2.50	0.20*1.5
FACCF2418V-303Y2R5-□ FACCF2418H-303Y2R5-□	30.00	210	140	2.50	0.20*1.5
FACCF2418V-223Y2R5-□ FACCF2418H-223Y2R5-□	22.00	210	140	2.50	0.20*1.5
FACCF2418V-153Y2R5-□ FACCF2418H-153Y2R5-□	15.00	210	140	2.50	0.20*1.5
FACCF2418V-123Y2R5-□ FACCF2418H-123Y2R5-□	12.00	210	140	2.50	0.20*1.5
FACCF2418V-203Y3R6-□ FACCF2418H-203Y3R6-□	20.00	120	70	3.60	0.30*1.5
FACCF2418V-153Y3R6-□ FACCF2418H-153Y3R6-□	15.00	105	70	3.60	0.30*1.5
FACCF2418V-123Y3R6-□ FACCF2418H-123Y3R6-□	12.00	105	70	3.60	0.30*1.5
FACCF2418V-802Y3R6-□ FACCF2418H-802Y3R6-□	8.00	105	70	3.60	0.30*1.5
FACCF2418V-552Y3R6-□ FACCF2418H-552Y3R6-□	5.50	105	70	3.60	0.30*1.5
FACCF2418V-123Y5R0-□ FACCF2418H-123Y5R0-□	12.00	80	45	5.00	0.40*1.5
FACCF2418V-902Y5R0-□ FACCF2418H-902Y5R0-□	9.00	60	40	5.00	0.40*1.5

## Product datasheet

### ELECTRICAL CHARACTERISTICS AT 25°C (V & H Series)

Part Number	Ind. (mH) 1KHz 0.25V Min	Lstray ( $\mu$ H) Typ	D.C. Resistance (mohms) Max	Rated Current (A)Typ	Wire (mm)	
FACCF2418V-702Y5R0-□	FACCF2418H-702Y5R0-□	7.00	60	40	5.00	0.40*1.5
FACCF2418V-502Y5R0-□	FACCF2418H-502Y5R0-□	5.00	60	40	5.00	0.40*1.5
FACCF2418V-352Y5R0-□	FACCF2418H-352Y5R0-□	3.50	60	40	5.00	0.40*1.5

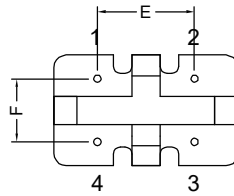
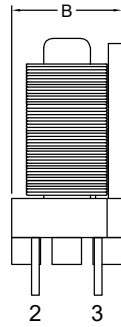
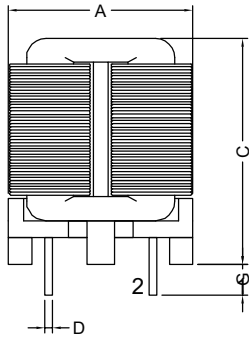
### ELECTRICAL CHARACTERISTICS AT 25°C (L Series)

Part Number	Ind. (mH) 1KHz 0.25V Min	Lstray ( $\mu$ H) Typ	D.C. Resistance (mohms) Max	Rated Current (A)Typ	Wire (mm)
FACCF2418L-353Y2R5-□	35.00	230	140	2.50	0.20*1.5
FACCF2418L-303Y2R5-□	30.00	210	140	2.50	0.20*1.5
FACCF2418L-223Y2R5-□	22.00	210	140	2.50	0.20*1.5
FACCF2418L-153Y2R5-□	15.00	210	140	2.50	0.20*1.5
FACCF2418L-123Y2R5-□	12.00	210	140	2.50	0.20*1.5
FACCF2418L-203Y3R6-□	20.00	120	70	3.60	0.30*1.5
FACCF2418L-153Y3R6-□	15.00	105	70	3.60	0.30*1.5
FACCF2418L-123Y3R6-□	12.00	105	70	3.60	0.30*1.5
FACCF2418L-802Y3R6-□	8.00	105	70	3.60	0.30*1.5
FACCF2418L-552Y3R6-□	5.50	105	70	3.60	0.30*1.5
FACCF2418L-123Y5R0-□	12.00	80	45	5.00	0.40*1.5
FACCF2418L-902Y5R0-□	9.00	60	40	5.00	0.40*1.5
FACCF2418L-702Y5R0-□	7.00	60	40	5.00	0.40*1.5
FACCF2418L-502Y5R0-□	5.00	60	40	5.00	0.40*1.5
FACCF2418L-352Y5R0-□	3.50	60	40	5.00	0.40*1.5

# Product datasheet

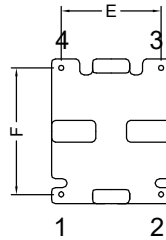
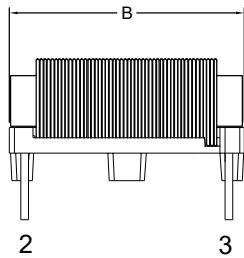
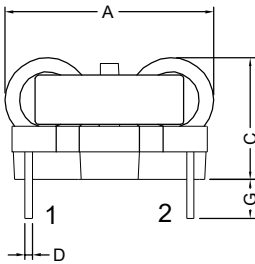
## ELECTRICAL INFORMATION

Dimension in mm



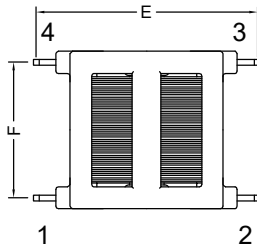
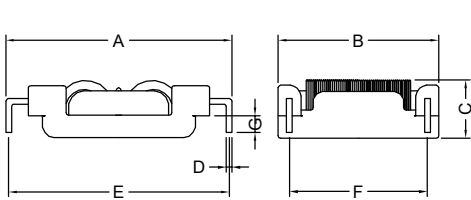
"V"

	A Max	B Max	C Max	D $\pm 0.1$	E $\pm 0.5$	F $\pm 0.5$	G $\pm 0.5$
-P1	24.0	14.0	31.0	0.80	13.0	10.0	3.50



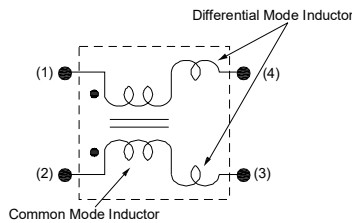
"H"

	A Max	B Max	C Max	D $\pm 0.1$	E $\pm 0.5$	F $\pm 0.5$	G $\pm 0.5$
-P1	24.0	25.5	15.0	0.80	17.0	21.5	3.50



"L"

	A Max	B Max	C Max	D $\pm 0.1$	E $\pm 0.5$	F $\pm 0.5$	G $\pm 0.5$
-P1	41.0	30.5	12.0	1.00	39.2	24.5	3.50



Schematic

# Product datasheet

## CURRENT VS TEMPERATURE RISE

